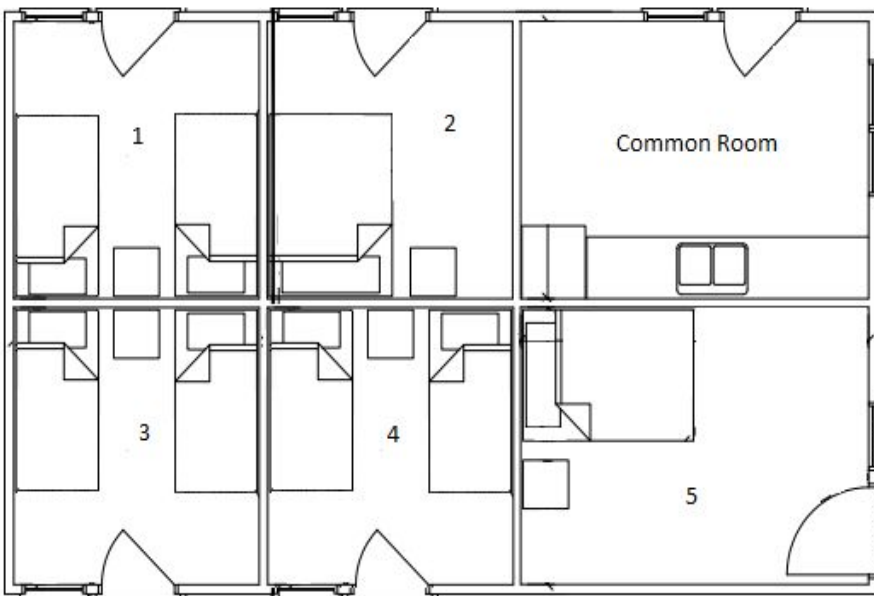




Staff Housing Information

Santa's Village has two staff residence building located onsite in the back of Whispering Pines Campground.



Room Layout & Amenities

We have two buildings each with 3 shared units and 2 private units, with a common room accessible to all staff in the residence. Individual room availability is limited and is on a first come first served basis.

Rooms and common space do not include washroom or shower facilities, but both residence building are located next to our newly built restroom facility that includes washrooms, laundry and private showers.

While staying in the staff residence you are also considered a guest of the campground and will have access to the same amenities and activities that our guest do.

Housing Costs and Deposit:

Rent is charged bi-weekly and deducted from your pay cheque. Should you vacate residence before the end of a week, you will still be charged for the full weekly amount, it WILL NOT be pro-rated for only the days that you are there.

You will also be charged a **\$100.00 deposit** to cover any discrepancies from the final room inspection when you leave the residence. Your deposit will be returned to you upon the completion of the final room inspection and sign off by Santa's Village Ltd Management. This must be done before you move out of housing. If you do not return or lose your unit key(s) there is a \$30.00 charge which will be deducted from your deposit.

For more details on the housing contract terms, availability and costs please contact:
employment@santasvillage.ca